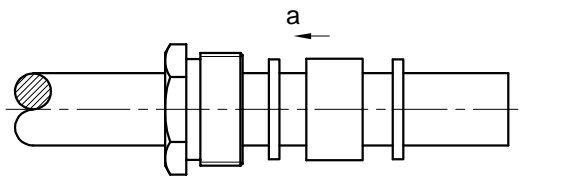
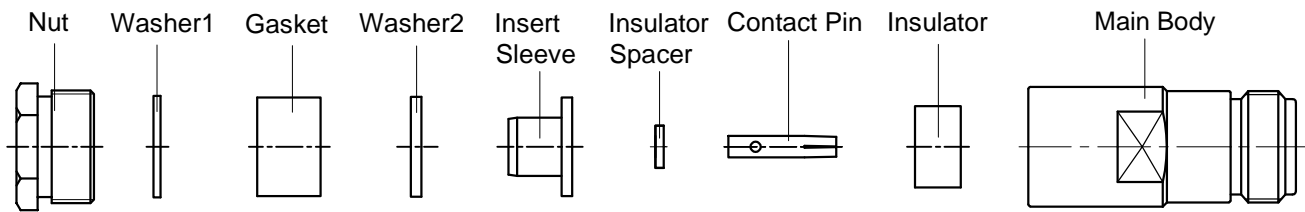
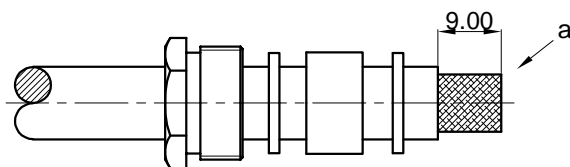


P/N: 50-02-4M01-025 (REV. A)

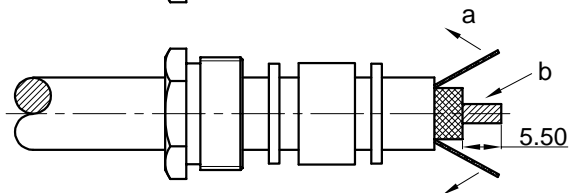
Description: N Straight Female Clamp for LMR400 Cable

**STEP 1**

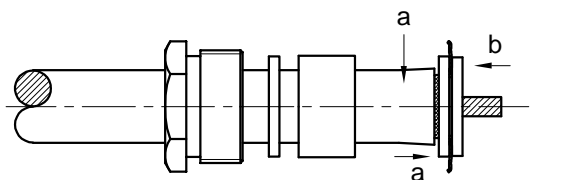
- a. Slide the Fastening Nut, Washer1 (thinner), Gasket, Washer2 (thicker) onto the cable in order as show.

**STEP 2**

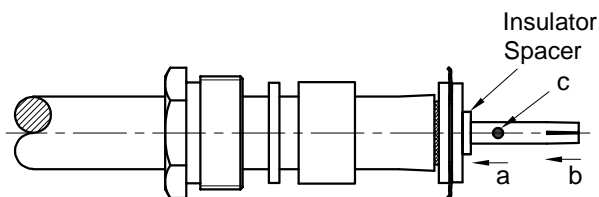
- a. Strip the cable's jacket according to the dimensions as shown.

**STEP 3**

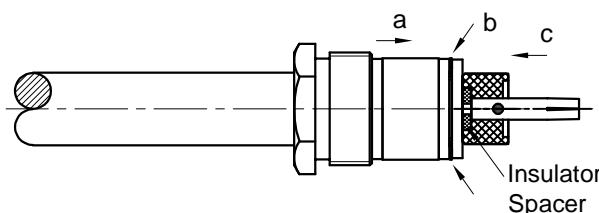
- a. Fan the braid.
- b. Strip the cable's dielectric according to the dimension.

**STEP 4**

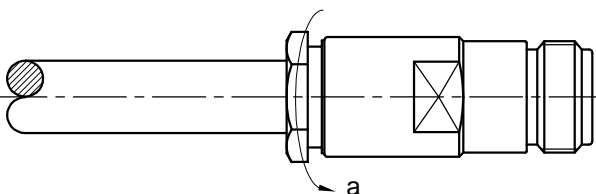
- a. Heat the cable jacket with a Heat gun if necessary.
- b. Move the Washer2 (thicker) onto the cable's braid.
- c. Push the Insert Sleeve into the cable until the bottom flush with the cable's dielectric (keep the Washer2 still).

**STEP 5**

- a. Slide the Insulator Spacer onto the cable's center conductor .
- b. Slide the Contact Pin onto the cable's center conductor until it stops.
- c. Solder the Contact Pin onto the cable.

**STEP 6**

- a. Slide the Gasket, Washer1 (thinner) and Fastening Nut until they stops (keep the Insert Sleeve still).
- b. Cut the excess of braid.
- c. Slide the Insulator onto the Contact Pin (Attention the direction of the Insulator).

**STEP 7**

- a. Slide the assembly into the Main Body, then screw the Fastening Nut into the Main Body with wrench.